



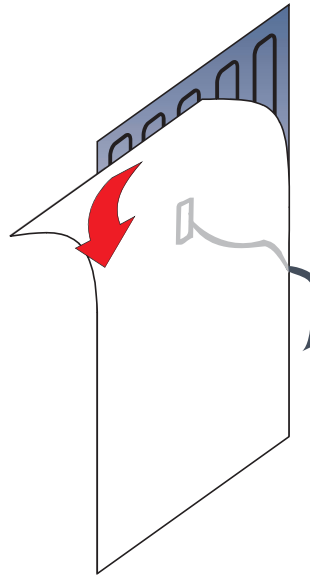
Coldbuster Clearview mirror demister heating pads stick to the back of your mirror, warming the mirror surface to prevent condensation.

Mirror demisters have a moderate wattage output and are economical to run. No extra power supply is required if they are wired directly into the light circuit. A flick of the light switch will turn the Clearview demister on/off.

## Configuration

The Coldbuster Clearview mirror demister is a paper-thin self adhesive pad with an ultra-thin heating element spaced consistently.

Clearview mirror demisters are available in both 400 x 600mm and 600 x 800mm sizes. The 1.3m long power supply cord is usually connected to a 240V light circuit. The warm up time is quick so the mirror demister heats up immediately when your light switch is turned on.



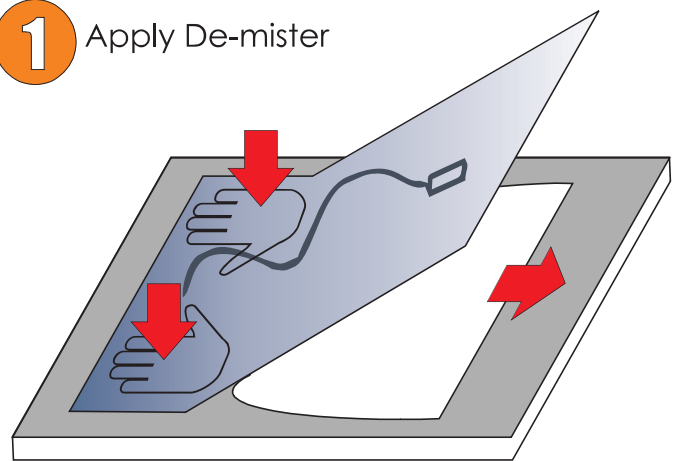
## Installation

With the mirror placed face down on a soft surface, ensure the back of the mirror is dry and clean (so as not to affect the adhesion of the Clearview demister). Without removing the wax backing, predetermine the position and mark the outline of the demister position.

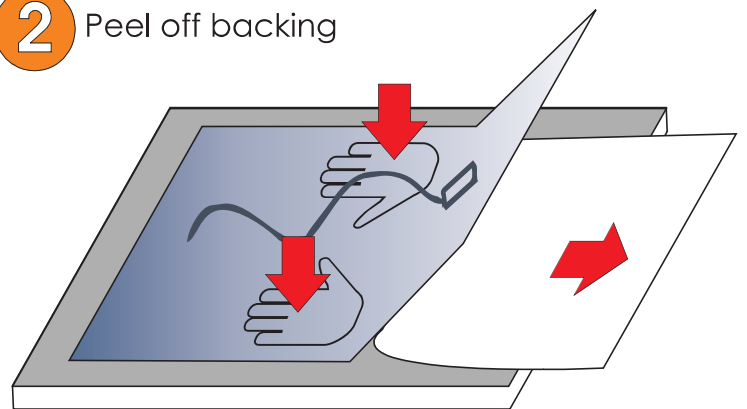
Peel back the thin backing layer on the short edge of the demister. Align and stick this locating edge to the back of the mirror and apply an even pressure to avoid the formation of bubbles as you gradually peel back the remaining backing layer.

The power lead connection is usually recessed into the wall. The mirror can be glued or screwed onto the wall. Multiple heaters can be connected together in parallel to cover larger areas.

### 1 Apply De-mister



### 2 Peel off backing



## Specification

Product Code	Width	Length	Wattage	Amps
MD NRG4060	400mm	600mm	40W	0.2A
MD NRG6080	600mm	800mm	85W	0.4A

